

**MDM**  
**Quick guide for suppliers**

## Quick guide for suppliers

---

### Table of contents

Table of contents .....	2
Revision index .....	3
Glossary .....	3
<b>1. Introduction .....</b>	<b>4</b>
<b>2. First steps .....</b>	<b>5</b>
<b>3. Finding projects if the name or the EQ number is known .....</b>	<b>6</b>
<b>4. Workflow order list /parts list / check / requests .....</b>	<b>7</b>
<b>5. Creating a parts or order list .....</b>	<b>8</b>
<b>5.1 Import Excel parts list (mechanics).....</b>	<b>10</b>
<b>5.1.1 Editing the import template.....</b>	<b>11</b>
<b>5.2 Generating the order / parts list EPLAN interface (electric / fluidic) .....</b>	<b>13</b>
<b>5.2.1 OEM specific configuration file .....</b>	<b>13</b>
<b>5.2.2 Generating a MDM parts list out of EPLAN .....</b>	<b>14</b>
<b>5.3 Relevant data fields.....</b>	<b>15</b>
<b>6. Analysis of parts list errors.....</b>	<b>17</b>
<b>6.1 How to display the MDM order list .....</b>	<b>17</b>
<b>6.2 Checking the errors .....</b>	<b>18</b>
<b>6.3 Starting of requests .....</b>	<b>19</b>
<b>6.3.1 Request „New manufacturer“ .....</b>	<b>19</b>
<b>6.3.2 Request „New device“ .....</b>	<b>20</b>
<b>6.3.3 Request „Project approval“ .....</b>	<b>22</b>
<b>6.3.4 Check parts list again .....</b>	<b>23</b>
<b>7. Universal approvals .....</b>	<b>24</b>
<b>7.1 Basics .....</b>	<b>24</b>
<b>7.2 Universal approvals: structure of the detail view .....</b>	<b>25</b>
<b>7.3 Universal approvals: syntax.....</b>	<b>26</b>
<b>7.3.1 Simple masking: .....</b>	<b>26</b>
<b>7.3.2 RegEx masking: .....</b>	<b>28</b>
<b>7.4 Universal approval does not match.....</b>	<b>30</b>
<b>7.4.1 Example: standard parts .....</b>	<b>31</b>
<b>7.4.2 Example: Icotek, Kabeleinführungsleiste, Bauform U.....</b>	<b>33</b>

## Quick guide for suppliers

---

### Revision index

Date	Version	Author / Reviser	Modifications
08.10.2018	1.0	Deck	Document created
30.11.2018	1.1	Deck / Gröning	Additions / Translation
15.11.2019	1.2	Deck / Gröning	Additions
28.01.2020	1.3	Deck / Gröning	Additions standard parts
21.01.2022	1.4	Deck	Additions

### Glossary

Term	Meaning
MDM	Material Data Manager
Supplier	Supplier, vendor, deliverer of machines or plants
Manufacturer	Manufacturer, producer, fabricator of single parts, components or units
OEM	Mercedes-Benz, Daimler Truck, facility or plant operator
Approval Manager	Responsible person of the facility or plant operator for material approvals
Maintenance	Maintenance and repair, up keeping
MFL	Material approval list (German abridgement of: Material Freigabe Liste)
Special approval	Project or supplier specific approval (no derivation from MFL) Suppliers have only reading rights for special approvals in their own projects
EQ number	Equipment number, unique designation of machine or project
Universal approval	Approval of type, classes / series or standard parts
Parts list	Parts, stock, piece list; BOM = bill off materials of used components with unique designation, i.e. the number is usually 1. Components can be listed multiply.
Order list	List of used components with accumulated numbers of components. In EPLAN: summarized parts list

## Quick guide for suppliers

---

### 1. Introduction

This quick guide should be an assistance for the usage of the MDM from a suppliers view. The most effective workflow for suppliers is accurately described.

This document is not a substitute for the operating instructions for users or the bookable two-day training for suppliers (see <http://www.materialdatenmanager.com/schulungen/>).

The description of specific functions or features can be found in the operating instructions for users (key <F1> or <http://onlinehilfe.materialdatenmanager.de/EN>).

The topics special approvals, parts list check and resulting requests are shown by a characteristic example describing the usage and interaction of suppliers and approval managers.

## Quick guide for suppliers

### 2. First steps

Please download the MDM from the VESCON homepage. The download instruction and the client program can be found in:

<http://www.materialdatenmanager.com/en/downloadfirst-steps/>

Please sign in and register accordingly to these instructions. After this the supplier specific rights are assigned by VESCON.



Your relevant project is normally already provided by the Mercedes-Benz AG or Daimler Truck AG. In order to make this project visible certain rights are assigned to you. So you can see the properties, approvals and parts lists. As holder of the role „supplier manager“ you have additional rights for „Quick administration“ so that you can assign reading or writing rights to further users.

Important: suppliers find their projects solely in the structure view „Project structure - plants“.

If you cannot find your machine or plant in the project structure, please contact your approval manger / contact person.

## Quick guide for suppliers

### 3. Finding projects if the name or the EQ number is known

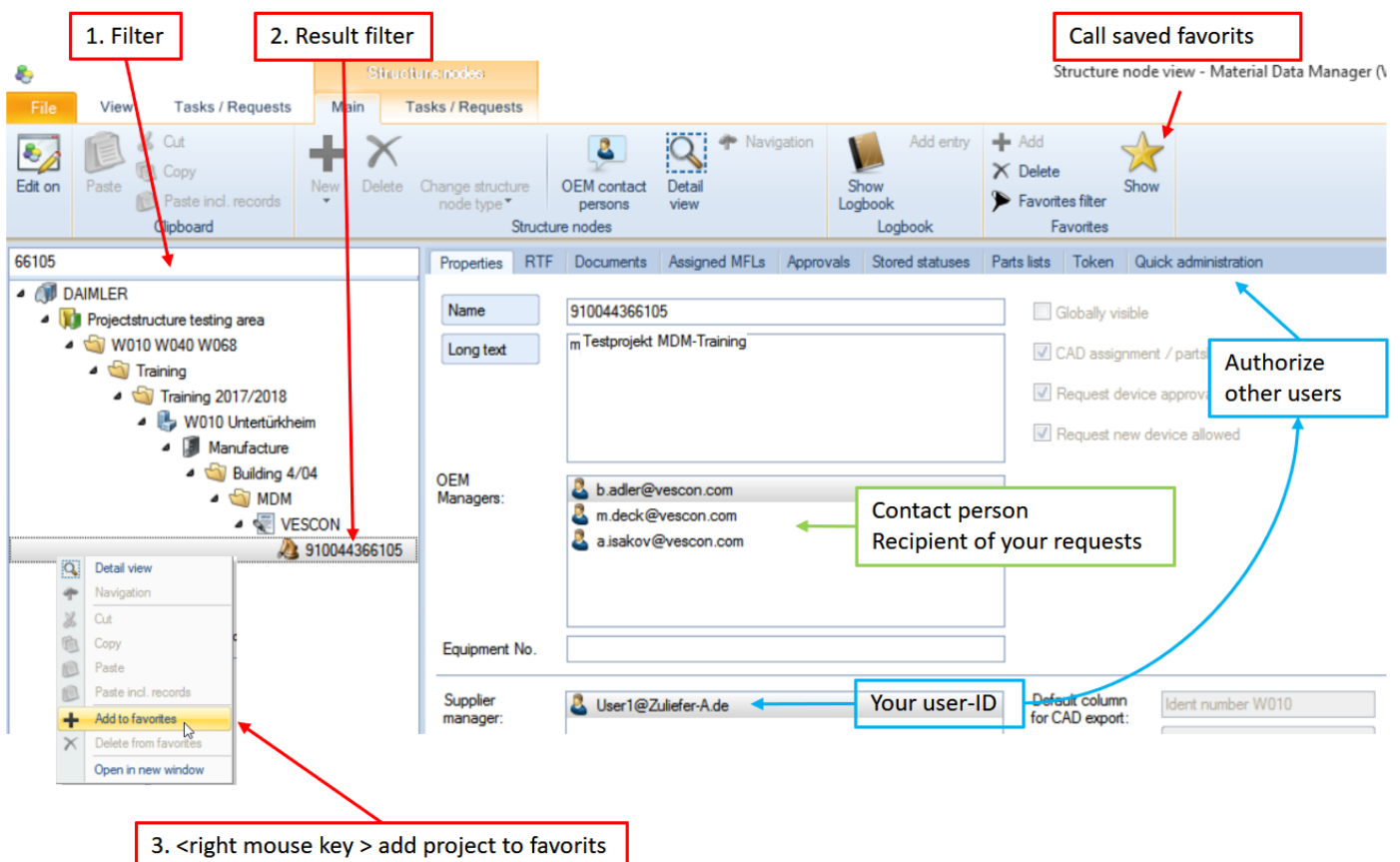
The best way to find the own project is filtering of a known string in the structure tree (e.g. EQ number, name of supplier or project).

Tip: as long as the filter is “active“, only those structure elements are displayed which are matching exactly the filtering criteria. The deactivation of the filter can be done by clicking on the button “clear filter”.



Please proceed as follows:

1. Enter the filter criteria and press <Return> (e.g. the last 5 digits of the EQ number)
2. Mark the found structure element (e.g. the machine) in the structure view by clicking
3. Press the right mouse key and “add to favorites”.

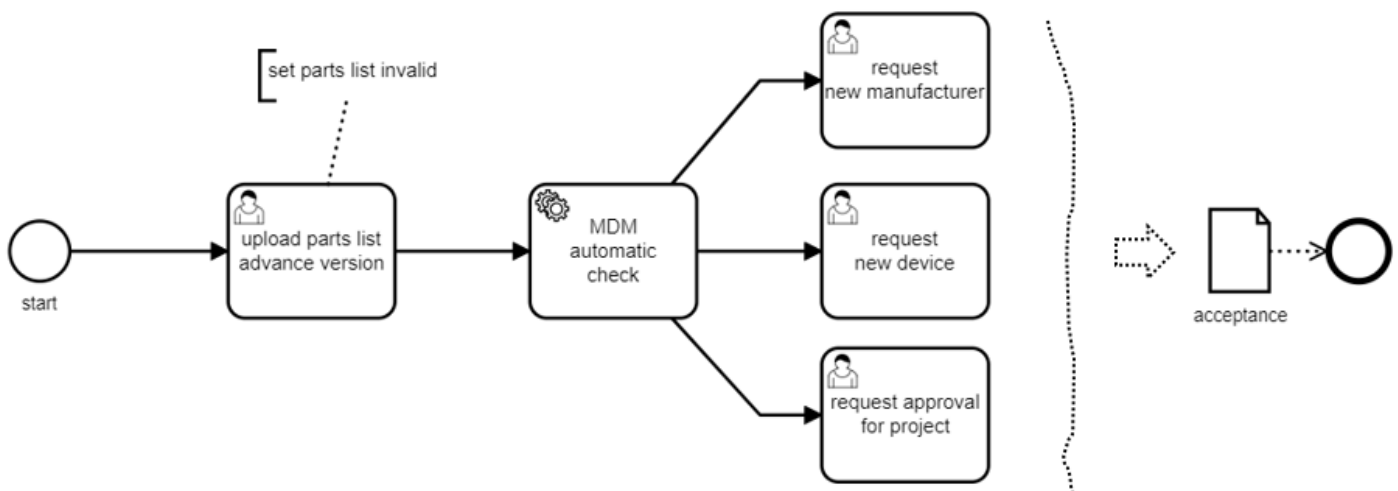


## Quick guide for suppliers

### 4. Workflow order list /parts list / check / requests

#### The best way

The most effective procedure for suppliers is the upload of an order or parts list as soon as possible. When importing the order or parts list the MDM checks automatically if errors exist. So errors can be corrected in their data sources (e.g. EPLAN, SAP) and requests for new devices or project approvals can be sent directly from the parts (better: order) list.



The uploaded parts list must be marked as „invalid“ and must be deleted after the sending of the requests.

This procedure can be reiterated as often as needed until an accurate and approvable parts list is available.

A valid parts list can be sent to the approval manager for “Parts list check”.

Structure node view - Material Data Manager (V 2.)

Parts lists

Main | Records | Tasks / Requests | Settings / Filter

Create status report | Check partslist again | **Request for parts list check** | Get partslist items

Properties | RTF | Documents | Assigned MFLs | Approvals | Stored statuses | **Parts lists** | Token | Quick administration

Drag a column header here to group by this column.

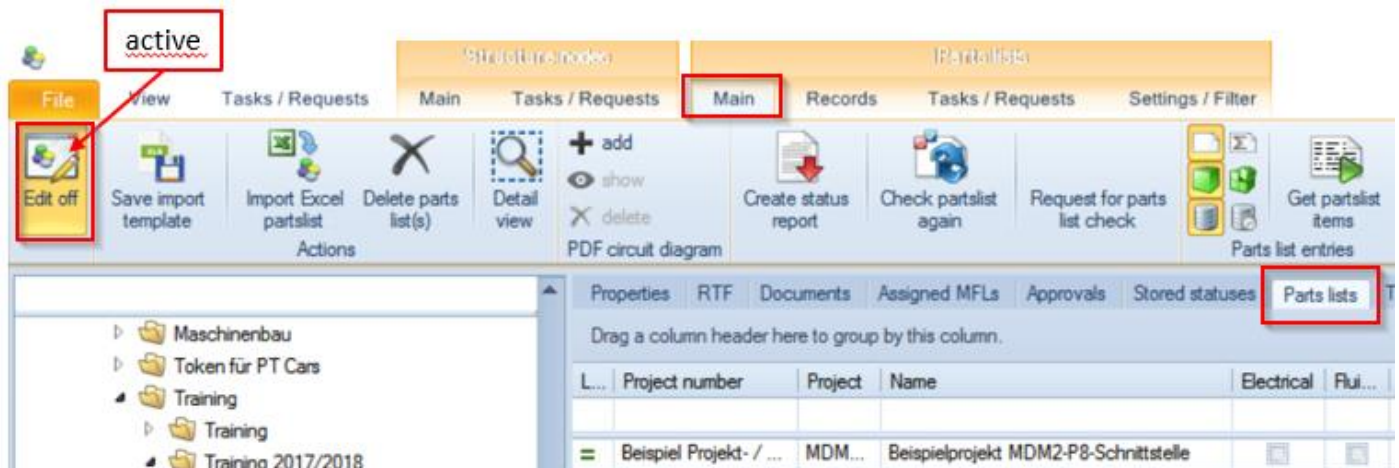
L...	Project number	Project	Name	Electrical	Flui...	Mechani...	Created on/at
=	Beispiel Projekt- / ...	MDM_Beispielprojekt_MB_LH13...	Beispielprojekt MDM2-P8-Schnittstelle	<input type="checkbox"/>	<input type="checkbox"/>	<input type="checkbox"/>	11/20/2018 2:10 PM
=	44366105	Qualifizierung	Schulung Abnehmer	<input checked="" type="checkbox"/>	<input type="checkbox"/>	<input type="checkbox"/>	8/1/2018 3:46 PM

## Quick guide for suppliers

### 5. Creating a parts or order list

For parts list upload writing rights are necessary on the related structure element. These rights are assigned by the responsible OEM or supplier user employing the „Quick administration“.

If the writing rights are present the button „Edit on“ is activatable.



View “Structure view” / tab “Parts list” / menu “Main”

If you have no writings rights please contact the responsible OEM or supplier user.

### Allocation to the MDM records

During the import the devices will be allocated by manufacturer and order number in the parts list to the manufacturer and order number in the MDM.



1. Allocation by manufacturer (variants of notation in the MDM are allowed)

2. Allocation by order number

1. Check: order number in the parts list = order number in the MDM
2. Check: order number in the parts list = article / type in the MDM
3. Check: article / type in the parts list = order number in the MDM

Tolerant search in the order number: special-, punctuation- and additional characters will be ignored.



## Quick guide for suppliers

### Workflow parts list import

- The import of a parts list generates a corresponding job
- The status can be checked in the job view

**Parts list excel import**  
You will be notified when the job is finished.

MDM

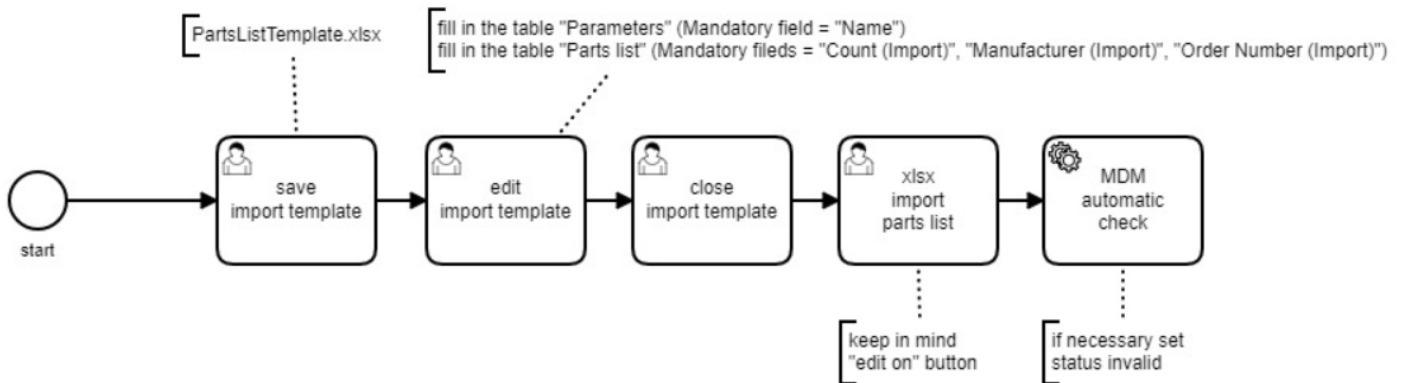
Ihr Job wurde beendet

Jobs - Material Data Manager (V 2.2.2)

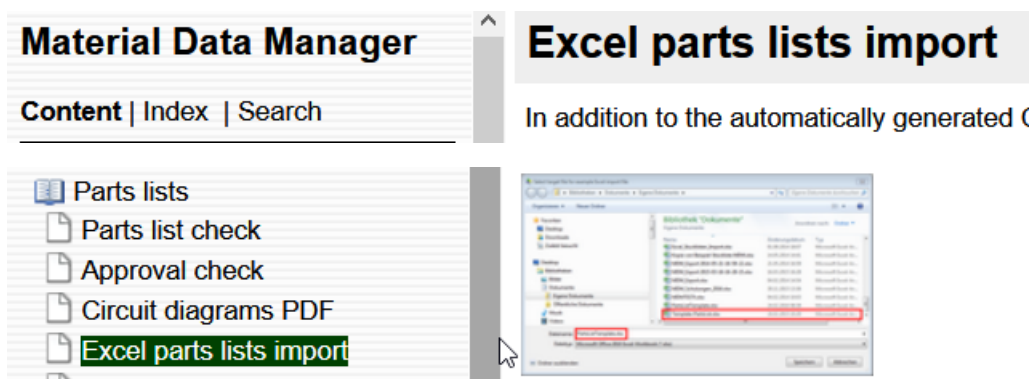
Created on/at	Created by	Status	Parameter	Type	Started on/at	Finished on/at	Result
7/12/2018 7:2...	m.deck@vescon.com	Finished	Filename: 'St...	Parts list excel import	7/12/2018 7:2...	7/12/2018 7:26 ...	Your parts list import finished successfully. Information ...
7/11/2018 8:4...	m.deck@vescon.com	Finished	Filename: 'M...	Parts list excel import	7/11/2018 8:4...	7/11/2018 8:50 ...	Your parts list import finished successfully. Information ...
6/25/2018 10:...	m.deck@vescon.com	Finished	Filename: 'P...	Parts list excel import	6/25/2018 10:...	6/25/2018 10:10 ...	Your parts list import unfortunately failed. You have to p...
6/25/2018 10:...	m.deck@vescon.com	Finished	Filename: 'M...	Parts list excel import	6/25/2018 10:...	6/25/2018 10:06 ...	Your parts list import finished successfully. Information ...

## Quick guide for suppliers

### 5.1 Import Excel parts list (mechanics)



Further information and a step by step instruction can be found in the online help (keyword „parts list“).



**Advice:** Erroneous data resulting from the Excel parts list must be rectified there and the parts list must be uploaded again. If all header data are identical the existing parts list will be overwritten.

**Tip:** Always save the versions of your revised Excel parts lists.

## Quick guide for suppliers

### 5.1.1 Editing the import template

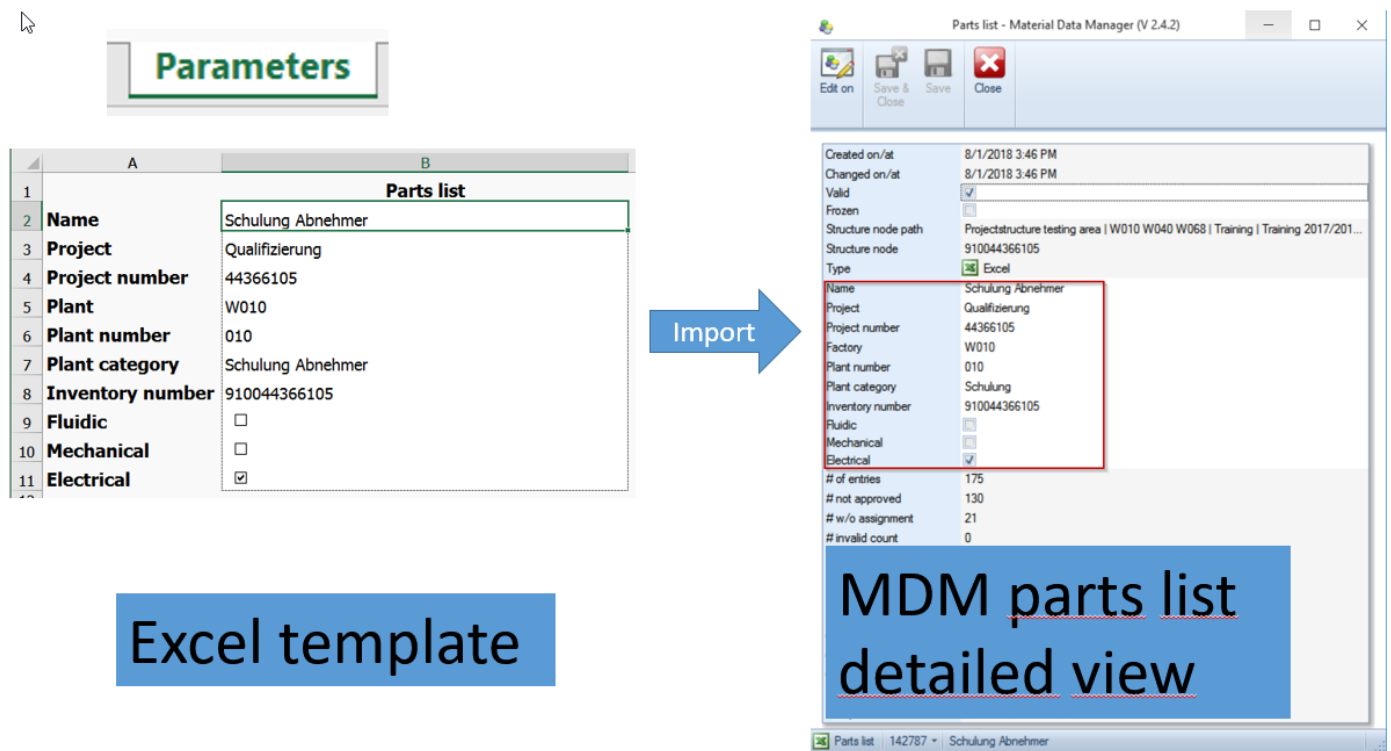
The import template (PartsListTemplate.xlsx) contains two Excel worksheets.



In order to import the parts list the following mandatory fields must be filled:

- Parameter: Name
- Parts list: number (import), manufacturer (import), order number (import)

Which data are assigned where to?



The diagram illustrates the data flow from an Excel template to the MDM parts list detailed view. On the left, an Excel spreadsheet titled 'Parameters' is shown with the following data:

	A	B
1		
2	<b>Name</b>	Schulung Abnehmer
3	<b>Project</b>	Qualifizierung
4	<b>Project number</b>	44366105
5	<b>Plant</b>	W010
6	<b>Plant number</b>	010
7	<b>Plant category</b>	Schulung Abnehmer
8	<b>Inventory number</b>	910044366105
9	<b>Fluidic</b>	<input type="checkbox"/>
10	<b>Mechanical</b>	<input type="checkbox"/>
11	<b>Electrical</b>	<input checked="" type="checkbox"/>

An arrow labeled 'Import' points from the Excel template to the MDM parts list detailed view on the right. The MDM interface shows the following data for the 'Schulung Abnehmer' part:

Created on/at	8/1/2018 3:46 PM
Changed on/at	8/1/2018 3:46 PM
Valid	<input checked="" type="checkbox"/>
Frozen	<input type="checkbox"/>
Structure node path	Projectstructure testing area   W010 W040 W068   Training   Training 2017/201...
Structure node	910044366105
Type	Excel
Name	Schulung Abnehmer
Project	Qualifizierung
Project number	44366105
Factory	W010
Plant number	010
Plant category	Schulung
Inventory number	910044366105
Fluidic	<input type="checkbox"/>
Mechanical	<input type="checkbox"/>
Electrical	<input checked="" type="checkbox"/>
# of entries	175
# not approved	130
# w/o assignment	21
# invalid count	0

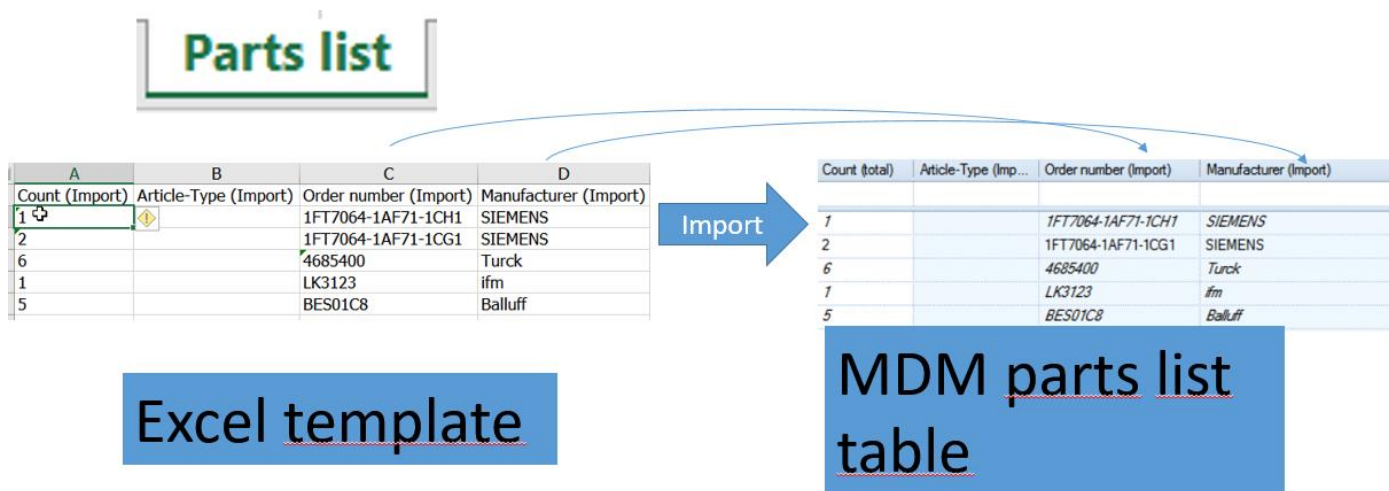
Labels 'Excel template' and 'MDM parts list detailed view' are placed below their respective images.

The data from the parameter table are assigned to the header data of the MDM parts list (detail view „parts list“). These data can be filled in or edited also afterwards (don't forget "Edit on").

When the existing parts list will be overwritten?

If all header data are identical the existing parts list will be overwritten.

## Quick guide for suppliers



The Excel columns are assigned to the MDM parts lists by the column names. The titles of the first row correspond with the column names of the MDM parts list. All columns in the template exist also in the MDM parts list.

## Quick guide for suppliers

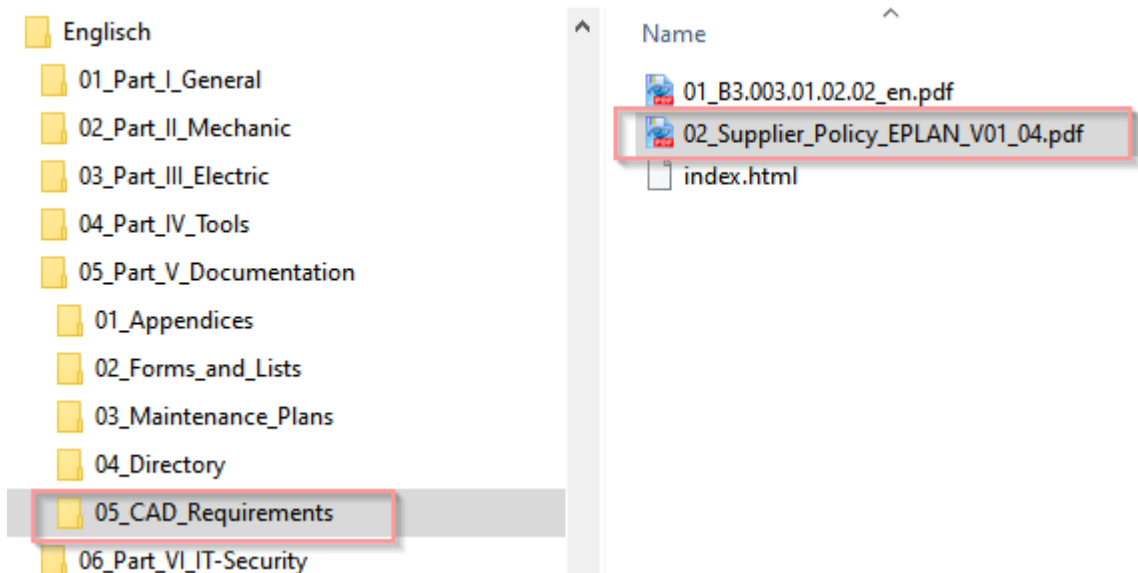
### 5.2 Generating the order / parts list EPLAN interface (electric / fluidic)

Precondition for generating of a MDM parts list out of EPLAN is the correctly installed EPLAN-MDM interface. Please check the following topics:

- Does the licence exist (EADN: Application 0068)?
- Is the interface correctly installed?
- Is the OEM specific configuration file installed?

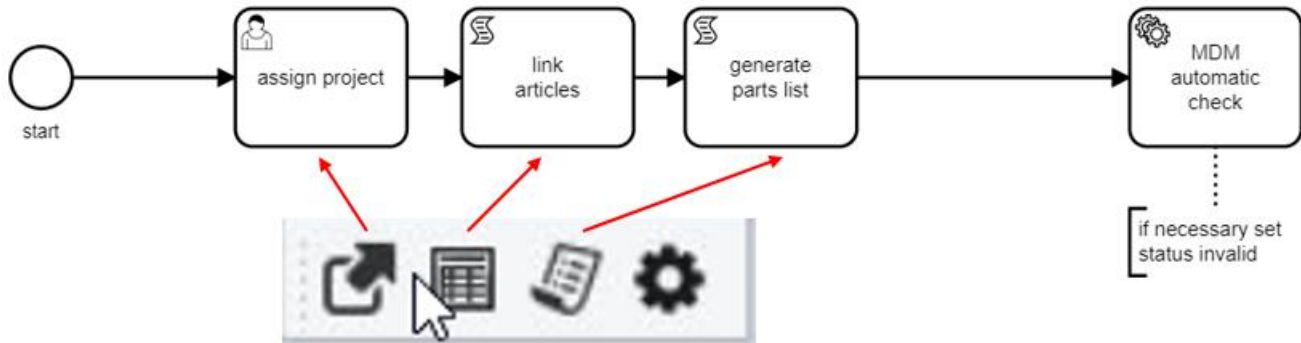
#### 5.2.1 OEM specific configuration file

In the OEM specific configuration file is specified which EPLAN properties will be assigned to the MDM parts list. This file is available in the powertrain requirement specification 05\_Part\_V\_Documentation\05\_CAD\_Requirements including a corresponding instruction.



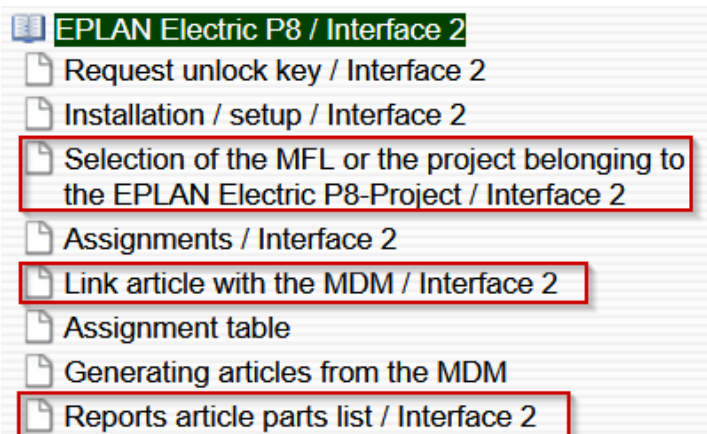
## Quick guide for suppliers

### 5.2.2 Generating a MDM parts list out of EPLAN



- The assignment of an EPLAN project to a MDM structure element (project) is necessary for the generation of a MDM parts list. The name and the ID of the structure element are registered in the project properties (<EPLAN.Project.UserSupplementaryField99 +100>).
- If necessary “own” variants of manufacturers notations must be defined in EPLAN, in so far that the MDM manufacturers notations or variants of manufacturers notations are different (see MDM online help).
- Linking EPLAN articles with MDM records: for the graphical EPLAN parts list the contents of the MDM data can be transferred to the free properties of the EPLAN article.
- Generating and upload of the parts list into the MDM (see MDM online help).

Detailed information can be found in the MDM online help.



If problems occur or if you have questions concerning the interface please contact the MDM hotline (email: [mdm@vescon.com](mailto:mdm@vescon.com)).

## Quick guide for suppliers

### 5.3 Relevant data fields

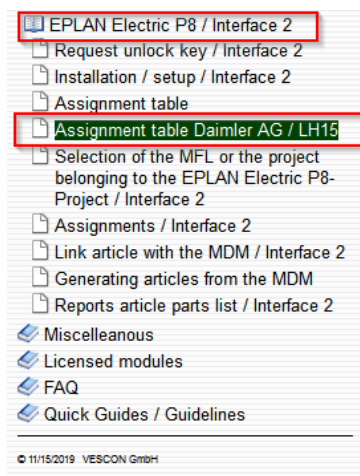
The following list describes which columns must be filled out and which properties will be transferred to EPLAN:

Legend	M	Mechanic, minimum content for a preliminary check			
	E	Electric, minimum content for a preliminary check			
	UF	Important for an approval by an universal approval			
	EPL-ID	EPLAN property which matches the MDM field / column			
Column header	M	E	UF	Description	EPL-ID
Number (Import)	X	X		Integral number > 0. Usually „1“, because parts list and not order lists will be imported	20482
Article type (Import)	X	X	X	Type information of the manufacturer. For standard parts the type of the standard (e.g. M10 x 8). Further information in chapter “universal approvals”.	22002
Order number(Import)	X	X	X	Order number of the manufacturer (Primary manufacturer)	22003
Manufacturer (Import)	X	X	X	Name of the manufacturer (Primary manufacturer)	22007
Standard (Import)	X	X	X	For standard parts the official denotation of the standard (e.g. ISO 12474)	22147[81]
Technical description (Import)	X	X		Repetition of denomination and the most important parameters. Addition of technical data which differentiate the device from devices with the same denomination. For construction parts drawing number / file name which leads to the machine documentation. Additional the corresponding fields of the parts list must be entered.	22004
Denomination (Import)			X	Denomination of the device	22147[80]
Replacement / Wearing parts (Import)	X	X		Advice to the evaluation of the part. With: E Replacement part V Wearing part EW Replacement part, work piece contacting VW Wearing part, work piece contacting	20907
Position (Import)	X			Link / Position number from the drawing.	19007
Device tag location (Import)		X		Device designation from the CAD (automatically transferred by the EPLAN MDM interface)	1220
Device tag plant (Import)					1120
Device tag (main part) (Import)					20008
Device tag (sub part) (Import)					
Complete device designation (Import)	X	X		Electric / Fluidic: automatically from EPLAN  General mechanic: The drawing number must be entered.	20006
Order number of the supplier (Import)	X			Order number of the supplier  Construction parts:	22147[82]

## Quick guide for suppliers

			The „Order number of the supplier (Import)“ must be repeated in the field „order number (Import)“. „Manufacturer (Import)“ is the name of the machine manufacturer.	
Quantity unit (Import) Value quantity unit (Import)			The MDM is not a tool for disposition and so only quantities are treated. Here the real values can be entered (e.g. length).	22147[83] 22147[84]
Ident number (Import) (storage part number)			If the ident number (storage part number) is available (e.g. gear motors or work piece contacting parts).	22147[86]
Device classification (Import)			Here your additional comments concerning the device can be entered (e.g. bulky loads, construction parts, obtaining by wholesaler).	22147[85]

**Advice:** For the complete list of mappings from MDM data fields to EPLAN properties, see the MDM Online Help. The assignments are defined in the OEM-specific configuration file (Mdm.WcfClient.Plugins.EplAddIn.2.Properties.json)



MDM field	Key in the configuration file	EPLAN property (read only)	EPLAN property
Parts list, plant	Prj.Plant	Plant Untertürkheim	10133
Parts list, plant number	Prj.PlantNumber	010	10130
	Prj.PlantName	Plant 010	UserSupplementaryField 95
Parts list, plant category	Prj.PlantArea	Assembly	10134
selected ident number	Prj.IdentField	Ident number W010	UserSupplementaryField 98
MFL/project name	Prj.MflName		UserSupplementaryField 99
MFL-/projet- ID	Prj.MflKey		UserSupplementaryField 100

MDM field	Key in the configuration file	EPLAN property (read only)	EPLAN property
<b>EPLAN Device properties, which can be written back in the article (project)</b>			
Technical description	Mdm.Description	22004	22147:95
Device class	Mdm.DeviceClassName	22026	
Height	Mdm.Height	22012	
Width	Mdm.Width	22013	

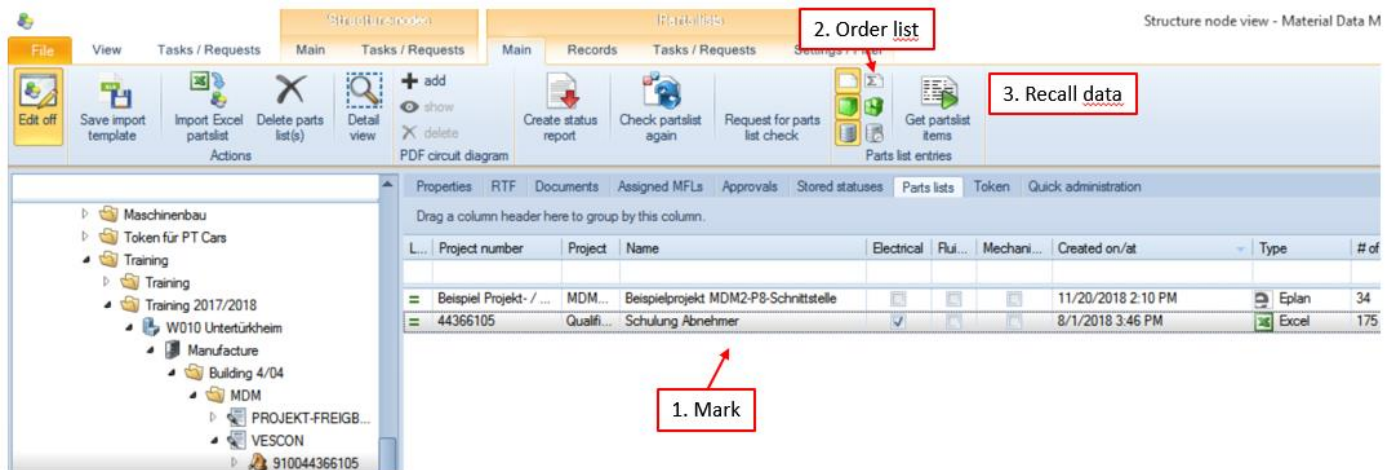


## Quick guide for suppliers

### 6. Analysis of parts list errors

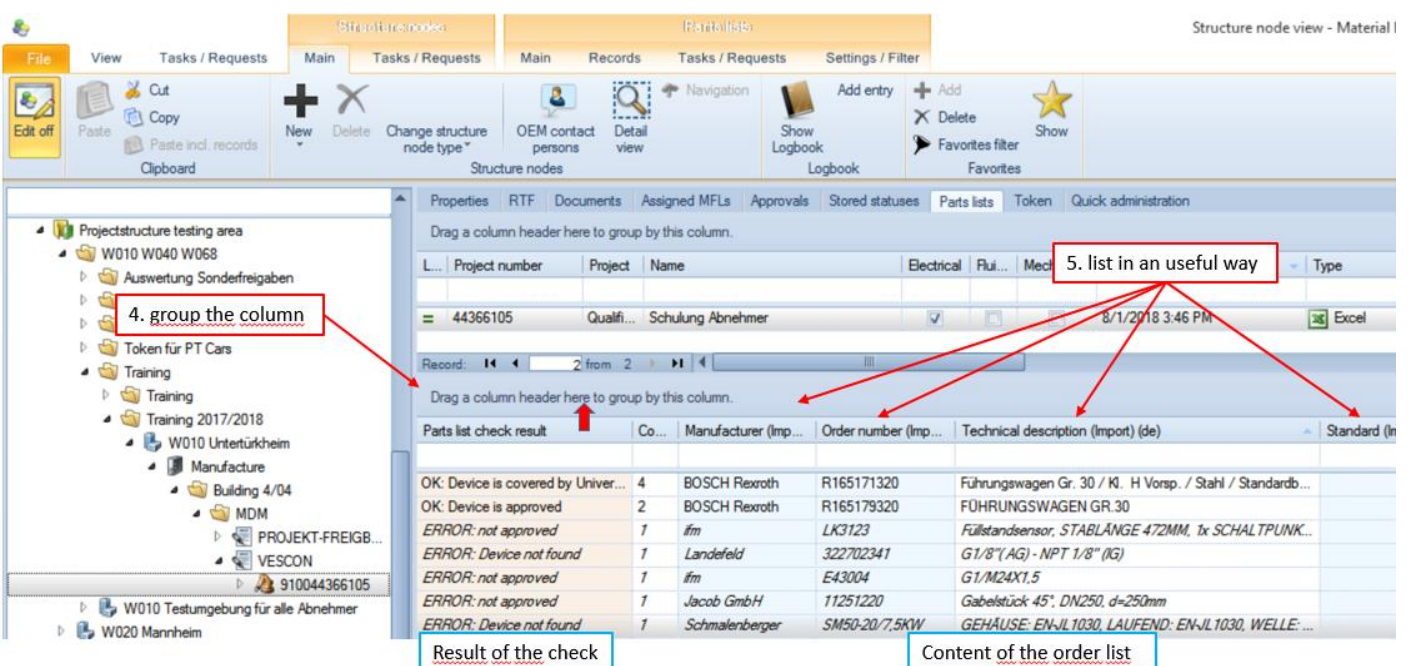
#### 6.1 How to display the MDM order list

View "structure view" / tab "parts lists" / menu "main"



1. mark the parts list
2. select the view „order list“
3. click on „get parts lists items“

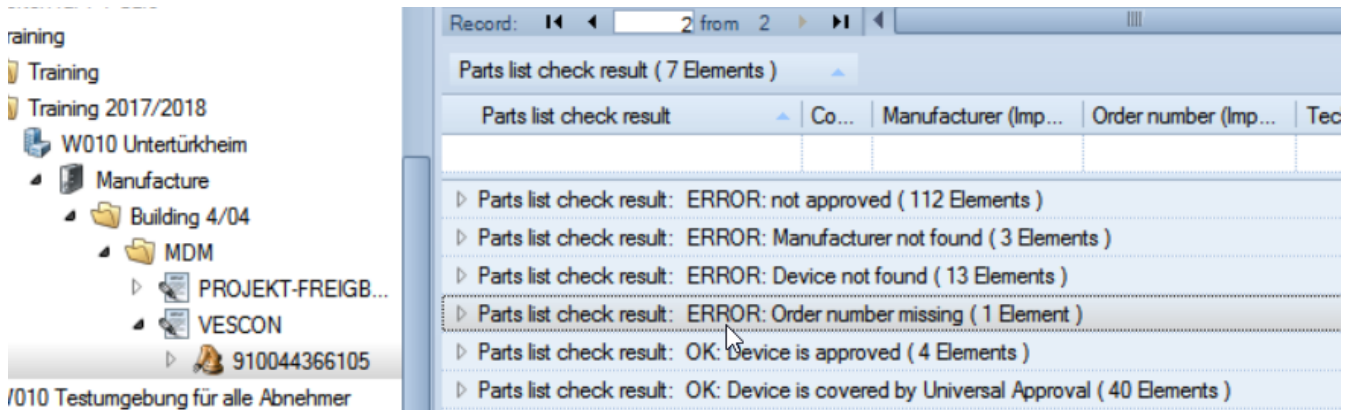
It's useful to display the items in an order list, because every article is only shown once in this totalized list.



4. group the column „Parts list check result“ (see MDM online help „grouping“)
5. structure the parts list in an useful way (menu „Settings / Filter“)

## Quick guide for suppliers

### 6.2 Checking the errors



The errors should be corrected in order of the error's seriousness.

Typical errors:

Error:	Reason	Rectification
		<i>Legend XLS: Excel parts list import EPL: EPLAN parts list import UF: Universal approval</i>
Manufacturer not found	Manufacturer not existing	Request "New manufacturer"
	Notation ≠ MDM and variants	XLS: adjust / correct name EPL: configure own notation EPL: correct wrong notation
Device not found	Device does not exist in the MDM	Request "New device"
	Notation of order number wrong <ul style="list-style-type: none"> <li>- missing of left-hand zeroes</li> <li>- type and order number in one field</li> <li>- additions like article numbers</li> <li>- EPLAN-article numbers (SIE.3RT.....)</li> <li>- ...</li> </ul>	XLS: correct order number EPL: correct order number in the article
	Universal approval does not match	Check the relevant fields: <ul style="list-style-type: none"> <li>- manufacturer (Import)</li> <li>- article type (Import)</li> <li>- order number (Import)</li> <li>- standard (Import)</li> <li>- denomination (Import)</li> </ul>
Not approved	No project approval	Request "Project approval"

## Quick guide for suppliers

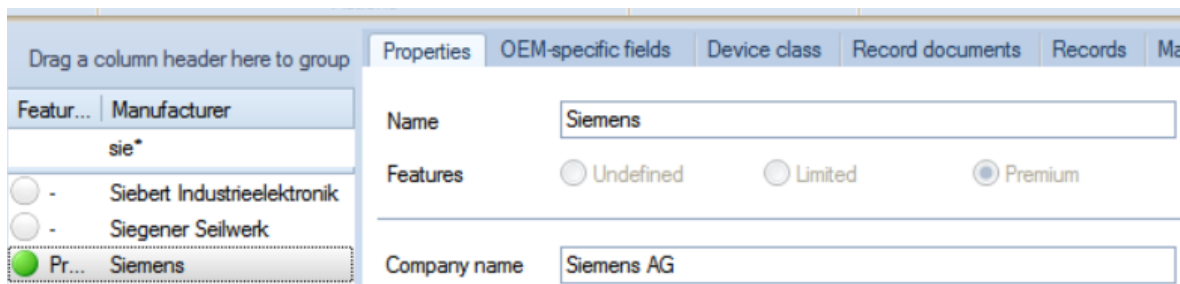
### 6.3 Starting of requests

#### 6.3.1 Request „New manufacturer“

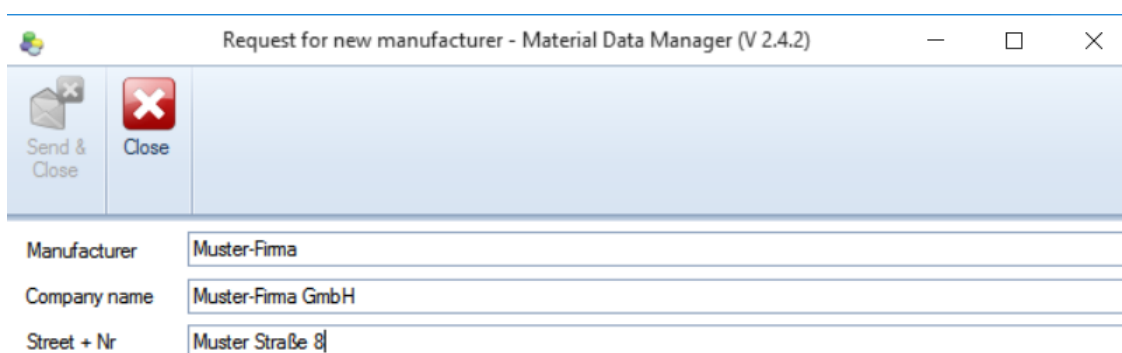
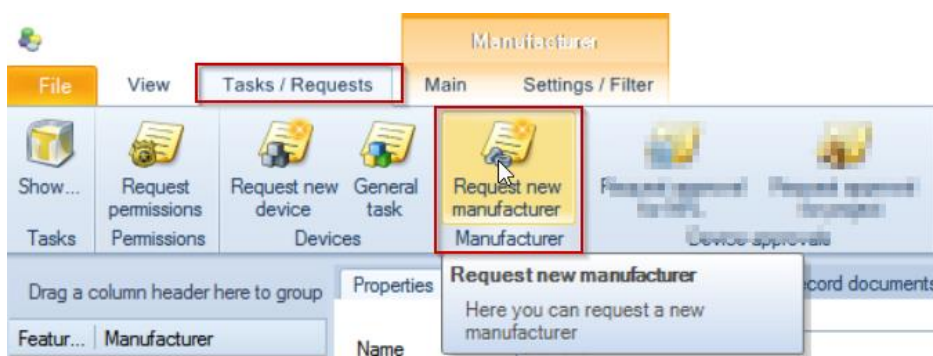
If a manufacturer is not existing in the MDM, he can be requested via this workflow. These requests will be approved soon insofar the manufacturer not already exists or not a trader / distributor / retailer is requested.

Please check first, if the manufacturer not already exists by opening the view “Manufacturers with accompanying data” and filter the name or a part of the name.

### Checking if the manufacturer already exists



### Starting the request



## Quick guide for suppliers

### 6.3.2 Request „New device“

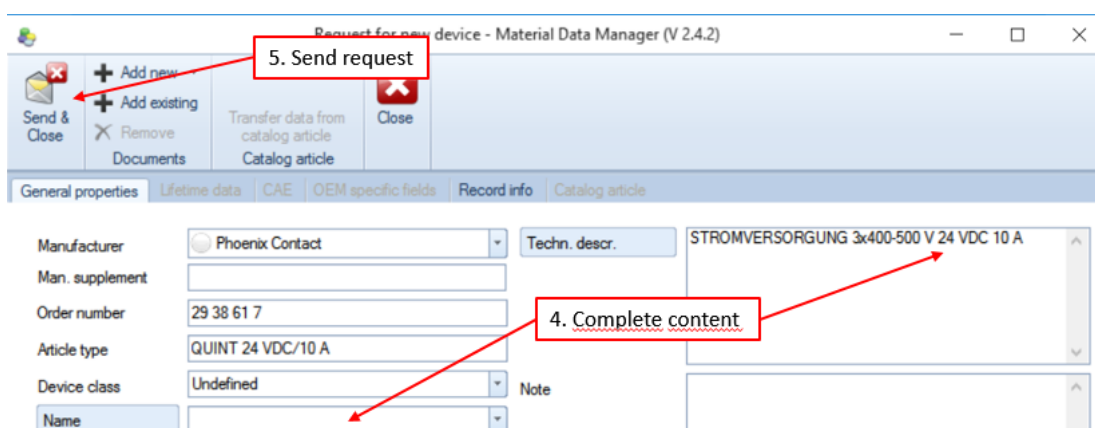
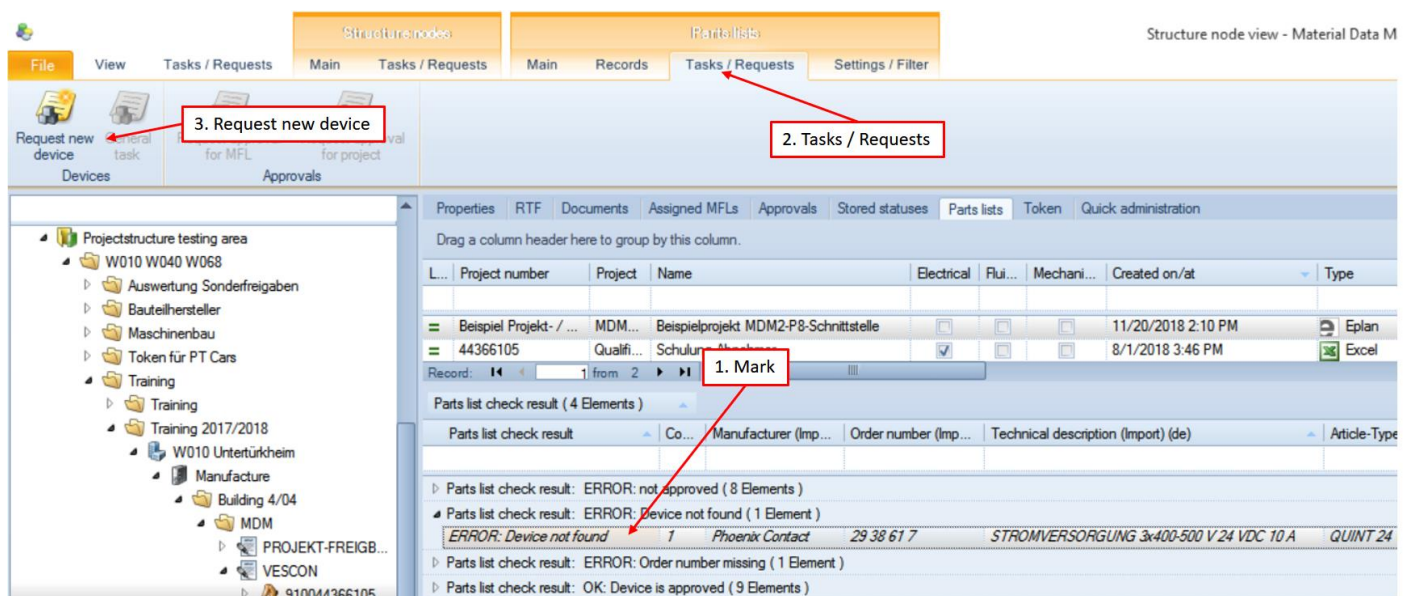
The request is necessary if the needed device (usually a catalogue article) does not exist in the MDM pool data.

Standard devices, fittings, production parts etc. are usually covered by universal approvals and must not be generated or requested in the MDM. Please check the necessary criteria in your parts list so that an universal approval can be effective.

The most convenient and most effective way to request a new device is to start the request directly from the view „order list“. The contents of the order or parts list will be transferred directly in the request form. This means: the higher the quality of the source data is (EPLAN articles, SAP, Excel), the less of effort is necessary for the request.

Please proceed as follows:

1. Mark the parts list record with the message „Device not found“.
2. Open the ribbon „Tasks / Requests“ (the right one in the section „Parts Lists“).
3. Start the request “New device”.
4. Complete the following form (manufacturer, order number, technical description, documents).  
Please take care for the data quality. Your request will be forwarded to a quality check.
5. Send the request.



## Quick guide for suppliers

---

**Advice:** By requesting a new device a request for project approval is started simultaneously.

### Data quality in the request „New device“

**Order number:** Every device in the MDM must be uniquely defined by the data fields „manufacturer“ and „order number“. Please inform you of the correct spelling by the existing order numbers of the specific manufacturer.

**Technical description:** In the data field „technical description“ user can realise what device is meant and what the most important parameters are.

#### Technical description for production components:

- Repetition of denomination.
- Addition of technical data which differentiate the device from devices with the same denomination.
- Advice to protected documents concerning ISO (DIN) 16016.
- Drawing number / file name which leads to the machine documentation. Additional the corresponding fields of the parts list must be entered.

**Document:** For further information documents must be listed in the data record - especially small PDF files only concerning the concrete device. Please do not load up complete catalogues.

Documents are necessary for the quality check and the approval workflow and are for this reason mandatory.

In the document the concrete order number should be displayed or a list which shows how order numbers of the manufacturer are composed.

If you load up an internet link please be sure that it matches the concrete device.

Please load up documents without proprietary notice concerning ISO (DIN) 16016 and personal data.

**Document production components:** Please don't load up any document.

### Quality check

VESCON checks the data quality of new devices in the workflow of “requests for new devices“. If data do not fulfil the requirements the request will be send back to the sender for the purpose of revision.

An approval by the OEM is only possible if the quality check was successfully completed by VESCON.

## Quick guide for suppliers

### 6.3.3 Request „Project approval“

This request can be started directly from the order or parts list. It is theoretically possible to start the request for all not approved devices in one form.

Please note that for every request a special technical reason must be given (see „Remarks“ in the form).

Exceptions (summary applications) have to be previously discussed with your contact partner of the maintenance department.

If devices are highlighted, the devices are blocked. These devices should not be used in new projects. Normally are these devices discontinued by the manufacturer.

Process:

1. Mark the devices with the error message „ERROR: not approved“ in the parts or order list.
2. Click on the button “Request for project approval” in the section / tab „Structure elements“ (so the project is automatically entered in the request form).
3. Enter the not approved devices per drag & drop into the form.
4. Enter the reason for your request in the field “Remarks”.
5. Forward the request.

Red = Locked devices

Parts list check result	Manufacturer (Imp...)	Order number (Imp...)	Technical description (Import)
ERROR: not approved	SIEMEN	6ES7138-4CB10-0...	AUTOMAT EINPOLIG C 2 A
ERROR: not approved	SIEMEN	5SX2 102-7	AUTOMAT EINPOLIG C 4 A
ERROR: not approved	SIEMEN	5SX2 104-7	AUTOMAT EINPOLIG C 4 A
ERROR: not approved	SIEMEN	5SX9 100	HILFSSCHALTER
ERROR: not approved	SIEMEN	6ES7151-1CA00-1...	Interface-modul IM151-1 Basis...
ERROR: not approved	SIEMEN	3RV1021-1CA15	Motorschutzschalter
ERROR: not approved	WÖE	33235	NH-Sicherungslasttrennleiste C...
ERROR: not approved	SIEMEN	3RT1036-1BB44	Schütz

Request for device approval in project - Material Data Manager (V 2.4.2)

Projects: Projectstructure testing area | W010 W040 W068 | Training | Training 2017/2018 | W010 Untertürkheim ...

Devices:

Device ID	Manufacturer	Device Name	Order Number
13164 - V7.4	Siemens	ET200S	6ES7151-1CA00-1BLO
4.765 - V2.1	Wöhner	Gr.00	33235
3353 - V6.2	Siemens	3RT1	3RT1036-1BB44

Remark for task

## Quick guide for suppliers

### 6.3.4 Check parts list again

When all requests are forwarded, they will be approved or refused by the OEM approval managers.

As a result a new update of the approved and of the listed devices is generated:

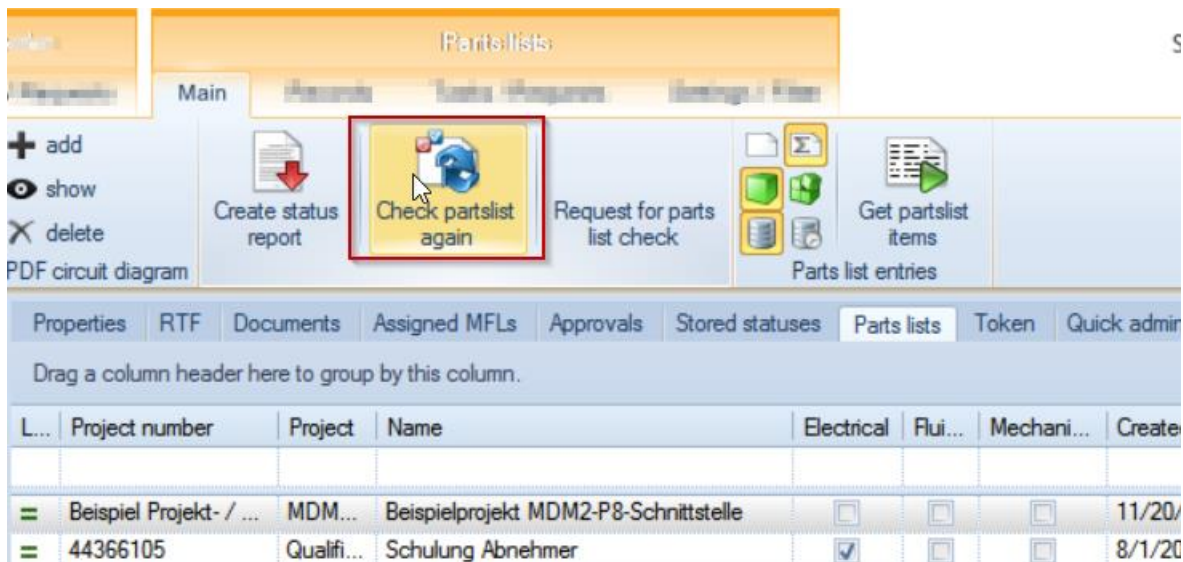
- Fewer errors: Manufacturer not found
- Fewer errors: Device not found
- Fewer errors: Not approved

**Advice:** The execution of your requests can take different times. The status of your requests is visible in the task view.

With the function „Check parts list again“ former parts list can be checked again the current parts list.

Process:

1. Mark any parts list
2. Click on „Check parts list again“
3. Analyse the result



The screenshot shows the 'Parts lists' section of the MDM software. The 'Check partslist again' button is highlighted with a red box. Below the toolbar, there is a table with columns for 'Project number', 'Project', 'Name', 'Electrical', 'Flui...', 'Mechani...', and 'Create'.

L...	Project number	Project	Name	Electrical	Flui...	Mechani...	Create
=	Beispiel Projekt- / ...	MDM...	Beispielprojekt MDM2-P8-Schnittstelle	<input type="checkbox"/>	<input type="checkbox"/>	<input type="checkbox"/>	11/20/
=	44366105	Qualifi...	Schulung Abnehmer	<input checked="" type="checkbox"/>	<input type="checkbox"/>	<input type="checkbox"/>	8/1/20

## Quick guide for suppliers

---

### 7. Universal approvals

#### 7.1 Basics

To avoid single or special approvals in projects or MFLs for several devices universal approvals can be defined. These universal approvals must be added to projects or MFLs.

If a parts list is checked against approved devices, as well project and MFL approvals and universal approvals are checked.

Only the OEM can generate and edit universal approvals.

Universal approvals are usually employed for not replacement relevant devices, e.g.:

- standard parts
- production components without relevance for replacement
- fittings / fixing material without relevance for replacement

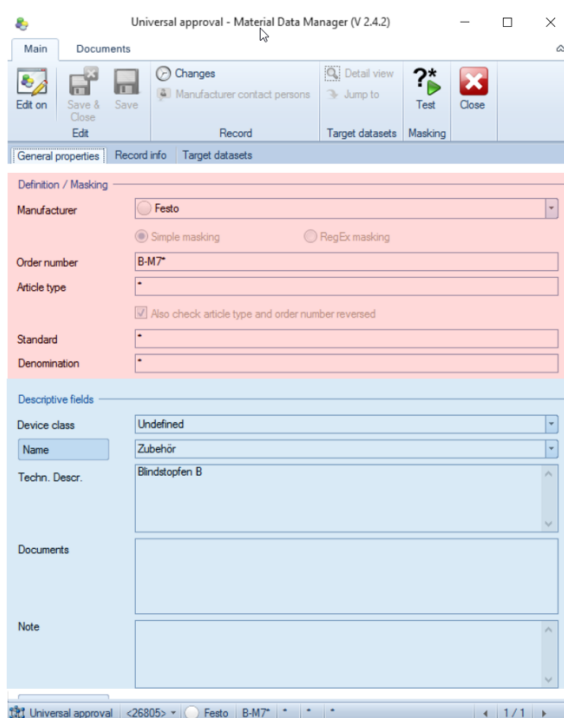


## Quick guide for suppliers

### 7.2 Universal approvals: structure of the detail view

The input fields are divided in two sections:

1. Masking section: in these fields a masking instead of real data for the universal approval is defined. These fields will be checked in the approval check, e.g. manufacturer: Festo, order number: B-M7\*, article type: \*. All devices of the manufacturer Festo with an order number beginning with B-M7 are covered.
2. Describing section: in the describing fields additional information can be entered.



Masking section

- The relevant parts list fields are :
  - Manufacturer (Import)
  - Order number (Import)
  - Article type (Import)
  - Standard (Import)
  - Denomination (Import)

Describing section

## Quick guide for suppliers

### 7.3 Universal approvals: syntax

#### 7.3.1 Simple masking:

Here the following wildcards are allowed:

- \* For any number of characters
- ? For one character

Special / additional characters are allowed and will not be regarded in the check.

Example:

**UF**

Definition / Masking

Manufacturer

Simple masking  RegEx masking

Order number

Article type

Also check article type and order number reversed

Standard

Denomination

**XLS**

	A	B	C	D	E	F	G
1	Count (Import)	Article-Type (Import)	Order number (Import)	Manufacturer (Import)	Standard (Import)	Technical Description (Import)	Denomination (Import)
2	3	5125	HBN-12/16X1	Festo		UF example 1: Foot mounting	
3	1	M10	all the same	all the same	DIN 582	UF example 2: Ring nut M10	Ringmutter

**MDM**

Parts list check result	Co...	Article-Type (Imp...	Manufacturer (Imp...	Order number (Imp...	Technical description (Import) (de)	Standard (Import)	Denomination (Import)
OK: Device is covered by Universal Approval	3	5125	Festo	HBN-12/16X1	UF example 1: Foot mounting		

## Quick guide for suppliers

The screenshot displays the EPLAN parts management interface. On the left, the 'EPLAN parts management' window shows various fields: Generic product group (Fluid power), Product group (Accessories), Product subgroup (Miscellaneous), Trade / subtrade (Pneumatics), Part number (FES.5125), and Manufacturer (FESTO). The 'Type number' is HBN-12/16X1. On the right, the 'MDM Universal approval' window shows the 'Definition / Masking' section with 'Manufacturer' set to Festo, 'Order number' set to HBN\*, and a checked checkbox for 'Also check article type and order number reversed'. Below these, the 'MDM parts list' window shows a table with the following data:

Parts list check result	Cou...	Article-Type (Import)	Manufacturer (Import)	Order number (Import)	Standard (I...	Technical description (Import)
Parts list check result: OK: Device is covered by Universal Approval (1 Element)						
OK: Device is covered by Universal Approval	1	HBN-12/16X1	Festo	5125		Fußbefestigung

**Advice:** Please note that in this example an approval matches, although the article type and order number are reversed. This is controlled by the checkbox in the mask of the universal approval definition.

## Quick guide for suppliers

### 7.3.2 RegEx masking:

In the masking of the order number, article type and standard only regular expressions (=RegEx) are allowed.

It is not possible in this quick guide to explain the whole potential of RegEx. Further informations concerning regular expressions can be found in the web (e.g.: [https://de.wikipedia.org/wiki/Regul%C3%A4rer\\_Ausdruck](https://de.wikipedia.org/wiki/Regul%C3%A4rer_Ausdruck) ).

Advice! Special / additional characters were not eliminated before checking, if RegEx masking is used.

Example:

**UF**

Definition / Masking

Manufacturer  \*(Manufacturer independent)  Simple masking  RegEx masking

Order number

Article type

Also check article type and order number reversed

Standard

Denomination

**XLS**

	A	B	C	D	E	F	G
	Count (Import)	Article-Type (Import)	Order number (Import)	Manufacturer (Import)	Standard (Import)	Technical Description (Import)	Denomination (Import)
1			HBN-12/16X1	Festo		UF example 1: Foot mounting	
2	3	M10	all the same	all the same	DIN 582	UF example 2: Ring nut M10	Ringmutter
3	1						

**MDM**

Parts list check result	Article-Type (Imp...)	Co...	Manufacturer (Imp...)	Order number (Imp...)	Technical description (Import) (de)	Standard (Import)	Denomination (Impc
OK: Device is covered by Universal Approval	M10	1	all the same	all the same	UF example 2: Ring nut M10	DIN 582	Ringmutter

## Quick guide for suppliers

Example, regEx masking, Source EPLAN article

**EPLAN parts management**

**MDM Universal approval**

**MDM parts list**

Row	Description	Value
79		
80	Benennung (Import)	Ringmutter
81	Norm (Import)	DIN 582
82		

Parts list check result	Article-Type (Import)	Manufacturer (Import)	Order number (Import)	Standard (Import)	Denomination (Import)	Technical description (Import)
Parts list check result: OK: Device is covered by Universal Approval (1 Element)						
OK: Device is covered by Universal Approval	1	M10	Würth	0395910	DIN 582	Ringmutter

**Advice:** Please note that the entries / values in norm / standard and denomination are taken from the "free properties" of the article.

Explanation of the syntax using the example above:

**Example Ringmutter (ring nut) <14089>: RegEX Maskierung**

**any character, never or as often as wanted**

**starts with „M“ followed by 1 digit 1 or 2 repetitions end**

**RINGMUTTER or Ringmutter**

**starts with „DIN“ followed by whitespaces or no whitespace end**

## Quick guide for suppliers

### 7.4 Universal approval does not match

If the parts list contains devices which should be actually covered by an universal approval and the message „Device not found“ occurs, the masking criteria of the universal approval are not fulfilled.

**Important: please adjust the columns in the settings of the tab „Approvals“ usefully, e.g.:**

MDM-ID / manufacturer / order number / article type / technical descriptions / denomination / standard / note

L.	MDM Id	Manufacturer	Order number	Article type	Technical description	Denomination	Standard	Note
<	>	<	>	<	>	<	>	<
1	<10793>	*(Manufacturer inde...	*	^(.s)?d{1,4}(-k)d{1,4}(-k)\...	Wellendichtringe allgemein:Artikeltyp beinhaltet: Wellendurc...	((WELLENDICHTSISIMME...	(DINIISO)\s?(3760 6194 ...	
2	<10792>	*(Manufacturer inde...	*	^d{1,3}(\d{1,2})?s?(-k)s?...	O-Ring allgemein:Artikeltyp beinhaltet: Innendurchmesser-Qu...	(^O-RING(E)?RUNDSCH...	(DINIISO)\s?(3771 3601)	
3	<10791>	*(Manufacturer inde...	*	(A B).{3}	Bohrbuchsen nach Norm: DIN172; DIN173; DIN179; ISO4247...	(BOHRBUCHSE b johrb...	^DIN\s?(172 173 179) S...	
4	<10790>	*(Manufacturer inde...	*	((G R)\s?(^d{1}\^d{1})?)M...	Schrauben allgemein:Artikeltyp beinhaltet: M[Zahl][mm]x[Län...	(SCHRAUBEN)?([Ss]chrau...	(DINIENISO)\s?(12071 ...	

With these settings all important columns concerning the device and the universal approval are visible and can be filtered or grouped.

The setting can be done in the ribbon „Settings / Filter“.



Position	Column heading	Visible
0	Level Indicator	<input checked="" type="checkbox"/>
1	MDM Id	<input checked="" type="checkbox"/>
2	Manufacturer	<input checked="" type="checkbox"/>
3	Order number	<input checked="" type="checkbox"/>
4	Article type	<input checked="" type="checkbox"/>
5	Technical description	<input checked="" type="checkbox"/>
6	Denomination	<input checked="" type="checkbox"/>
7	Standard	<input checked="" type="checkbox"/>
8	Note	<input checked="" type="checkbox"/>

## Quick guide for suppliers

### 7.4.1 Example: standard parts

In order to find the matching universal approval the standard part can be filtered in the column „Standard“. After this the criteria can be checked and changed in the parts list data.

**Example: You are searching for the definition of a feather key according to DIN 6885.**

By filtering of the standard number in the column „Standard“ the relevant universal approval can be found.

Technical description	Denomination	Standard
Passfeder allgemein: Artikeltyp beinhaltet: Passfederform[Leerzei...	(PA(SS B)FEDER Pa(ss B)f...	6885
	(DIN ISO)\s?(6885 2491)	

A double click on the universal approval opens the detail view and the criteria can be checked.

#### Definition / Masking

Manufacturer

\* (Manufacturer independent)

Simple masking

RegEx masking

Order number

.\*

Article type

.\*

Also check article type and order number reversed

Standard

(DIN|ISO)\s?(6885|2491)

Denomination

(PA(SS|B)FEDER|Pa(ss|B)feder|FEDERKEIL|Federkeil)

#### Descriptive fields

Device class

Undefined

Name

Undefiniert

Techn. Descr.

Passfeder allgemein:  
 Artikeltyp beinhaltet: Passfederform[Leerzeichen]Abmaße  
 Beispiel: A 6-6-16  
 Norm siehe Normfeld- Regulärer Ausdruck  
 Benennung: Passfeder

## Quick guide for suppliers

Further examples of typical standard parts which are included in universal approvals are available:

	A	B	C	D	E	F	G
	Count (Import)	Article-Type (Import)	Order number (Import)	Manufacturer (Import)	Standard (Import)	Technical Description (Import)	Denomination (Import)
1	9	40x2 72 NBR 872	49075168	Freudenberg Sealing Technologies	DIN 3771	O-RING; 40x2 72 NBR 872; Innendurchmesser d1= 40 mm Ringdicke d2= 2 mm	O-Ring
2	3	egal	egal	egal	DIN 6885	Passfeder	Passfeder
3	2	M10	egal	egal	DIN 582	Ringmutter M10	Ringmutter
4	4	M4X40	0080440	Würth	ISO4762	Zylinderschraube Stahl 10.9, M4X40, ISO4762	Zylinderschraube
5	4	M4x40 10.9	0080440	Würth	ISO4762	Zylinderschraube Stahl 10.9, M4X40, ISO4762	Zylinderschraube
6	8	MB 12	65367101	Mädler	DIN 5406	Sicherungsblech DIN 5406, Typ MB 12 Innendurchmesser = 60 mm	SICHERUNGSBLECH
7	7	MU-DIN508-8-(A2K)-M10X12	446110	Würth	DIN 508 (ISO 299)	Mutter für T-Nuten / M10 / Stahl / Verzinkt M10X12	NUTMUTTER
8	5	SHB-ISO7089-200HV-(ZFSH)-D16	464140616	Würth	ISO 7089	SHB-ISO7089-200HV-(ZFSH)-D16	Scheibe
9	6	TM-A/B1	TM-A/B1	FKB	DIN3015	Tragschienen.Mutter	Tragschienen-Mutter

### Parts list import template

The fields highlighted in **yellow** match to the masking fields of the corresponding universal approval.

### Result after importing the template

Parts list check result	Article-Type (Import)	Cou...	Manufacturer (Import)	Order number (Import)	Standard (I...	Denomination (Imp...	Technical description (Import) (de)	Universal Approval ID
OK: Device is covered by Universal Approval	M10	2	egal	egal	DIN 582	Ringmutter	Ringmutter M10	<39325>
OK: Device is covered by Universal Approval	egal	3	egal	egal	DIN 6885	Passfeder	Passfeder	<39322>
OK: Device is covered by Universal Approval	TM-A/B1	6	FKB	TM-A/B1	DIN3015	Tragschienen-Mutter	Tragschienen.Mutter	<39321>
OK: Device is covered by Universal Approval	MU-DIN508-8-(A2K)-M10X12	7	Würth	446110	DIN 508 (IS...	NUTMUTTER	Mutter für T-Nuten / M10 / Stahl / Verzinkt M10X12	<39321>
OK: Device is covered by Universal Approval	M4X40	4	Würth	0080440	ISO4762	Zylinderschraube	Zylinderschraube Stahl 10.9, M4X40, ISO4762	<39334>
OK: Device is covered by Universal Approval	M4x40 10.9	4	Würth	0080440	ISO4762	Zylinderschraube	Zylinderschraube Stahl 10.9, M4X40, ISO4762	<39334>
OK: Device is covered by Universal Approval	SHB-ISO7089-200HV-(ZFSH)-D16	5	Würth	464140616	ISO 7089	Scheibe	SHB-ISO7089-200HV-(ZFSH)-D16	<39327>
OK: Device is covered by Universal Approval	MB 12	8	Mädler	65367101	DIN 5406	SICHERUNGSBLE...	Sicherungsblech DIN 5406, Typ MB 12 Innendur...	<39341>
OK: Device is covered by Universal Approval	40x2 72 NBR 872	9	Freudenberg Sealing ...	49075168	DIN 3771	O-Ring	O-RING; 40x2 72 NBR 872; Innendurchmesser d1...	<46855>

**Advice:** Please note that usually universal approvals already exist for standard parts. This means that an "request new device" for standard parts is no longer necessary.



## Quick guide for suppliers

### 7.4.2 Example: Icotek, Kabeleinführungsleiste, Bauform U

In order to find the matching universal approvals pointedly filtering and grouping is possible. After this the criteria can be checked and changed in the parts list data.

**Example: You are searching the ICOTEK Kabeleinführungsleiste, Bauform U**

Find the matching universal approvals by pointedly filtering and grouping.

1. Grouping by manufacturer
2. Filtering by universal approval

1. Grouping by manufacturer

2. Filtering by universal approval

3. universal approval found

L.	MDM Id	Manufacturer	Order number	Article type	Technical description
Manufacturer: Icotek ( 12 Elements )					
	<2660>	Icotek	54???	KELU*	Kabeleinführungsleiste, Bauform U
	<5930>	Icotek	472??	KEL*	
	<2659>	Icotek	43???	KEL-QT*	Kabeldurchführungsleiste
	<5932>	Icotek	42???	KEL*	

Definition / Masking

Manufacturer	<input checked="" type="radio"/> Icotek
	<input checked="" type="radio"/> Simple masking <input type="radio"/> RegEx masking
Order number	54???
Article type	KELU*
	<input type="checkbox"/> Also check article type and order number reversed
Standard	*
Denomination	*

Descriptive fields

Device class	Undefined
Name	Undefiniert
Techn. Descr.	Kabeleinführungsleiste, Bauform U